

IMAGING SYSTEMS, INC.

SUITES 100-103 111 PETROL POINT

PEACHTREE CITY, GA 30269

1-800-628-1302

PANOREX CMT

*Complex Motion Tomographic
and Panoramic Imaging System*



ENHANCING THE WAY YOU SEE PATIENTS.

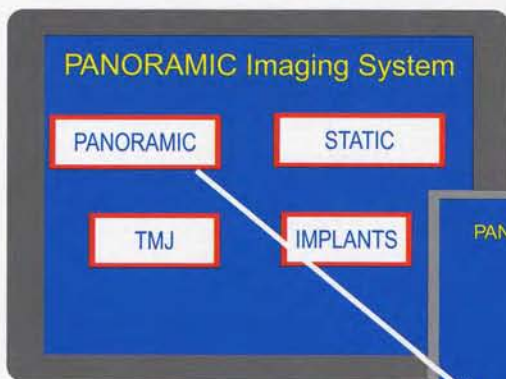
PANOREX CMT

The Panorex CMT is a state of the art Tomographic and Panoramic Imaging System, providing complex motion tomographic capability for Implant, TMJ and sinus imaging.

The Panorex CMT allows the patient to face forward, facilitating accurate patient positioning and ease of use. This feature also readily accommodates wheel chair patients.

A Touch Screen Monitor is utilized for fast and easy selection of panoramic options and tomographic slice locations.

Touch Screen Interface



Convenient touch-screen monitor for fast and easy selection of desired Imaging applications.

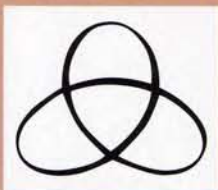


Panoramic Imaging

The Panorex CMT provides a quick and easy method for producing excellent and consistent panoramic images. The intuitive touch screen monitor allows the operator to quickly select the proper arch size and exposure factors.



Complex Motion Tomography



Hypocycloidal motion

The Panorex CMT utilizes complex motion tomography, providing the most advanced form of tomography available. The complex motion (hypocycloidal) along with constant magnification result in non-distorted, accurate and superior diagnostic images.

In complex motion tomography, the x-ray beam and film move in a special geometric pattern via a unique robotic linkage, **blurring out (eliminating)** structures outside of the desired slice plane. The **more complex** the tomographic motion, the **more effective the blurring** and less the unwanted structures and artifacts that might interfere with interpretation. Streaking and *unwanted artifacts* are inherent symptoms of *linear tomography*.

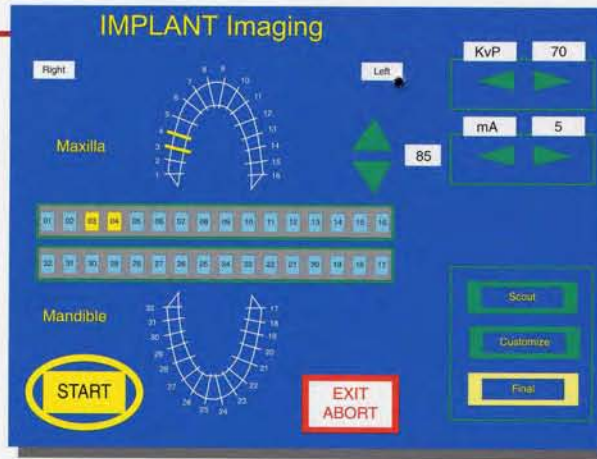
The Panorex CMT is capable of producing slice thicknesses from 2 mm to 15 mm, and each tomographic slice takes only **6 seconds** to complete.

Implant Imaging

The success of dental implants is greatly aided by proper treatment planning prior to placement. Pre-surgical imaging is vital in obtaining accurate diagnostic information of the targeted implant site. The dental specialist needs to evaluate the location of critical anatomical features, such as the alveolar canal and the maxillary sinus. The quantity, quality and orientation of the bone require assessment as well.

The forward facing design of the Panorex CMT allows for easy and reproducible patient positioning. The sophisticated Customize feature in the operations software ensures precise imaging of the targeted areas on an individual patient basis.

The software automatically positions the machine for 4 cross-sectional slices and 1 sagittal (tangential) slice of the area of interest. Measurements can be confidently made with no ambiguity.



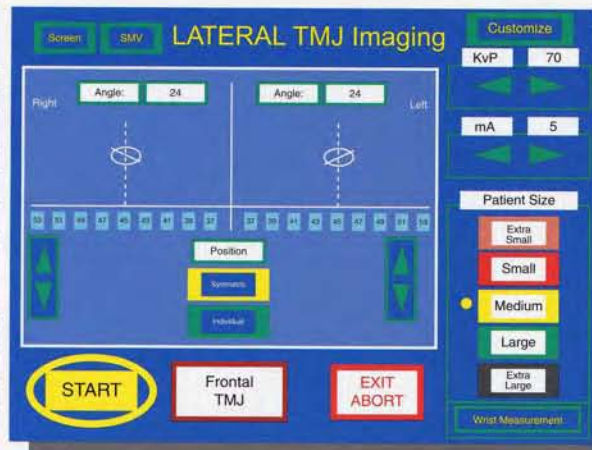
The Panorex CMT provides a simple touch-screen interface allowing for straight forward selection of any tooth number along the mandibular or maxillary arch.



TMJ Imaging

Proper diagnostic imaging is a tremendous aid when treating TM disorders, such as the position and displacement of the condyle in the fossa in various jaw positions. Since every patient is unique, the Panorex CMT's sophisticated software allows for exact adjustments to optimize imaging for each individual.

The software automatically positions the machine for a series of Lateral views along each condyle, including an open jaw slice; as well as Frontal views. The joint position as well as bone morphology can be studied with precision.



The TMJ application also incorporates pre-programmed templates utilized for various patient sizes in order to quickly obtain Lateral and/or Frontal views for screening purposes.

The Panorex CMT TMJ imaging procedure allows the operator to obtain a basal view of the condyles (SMV) in order to measure the exact angle of each condyle. These angles can be entered into the software individually for each side. ANY degree angle can be entered. Also, the operator can determine the exact center of both condyles and enter those values as well. These features will help produce optimal Lateral and Frontal views.

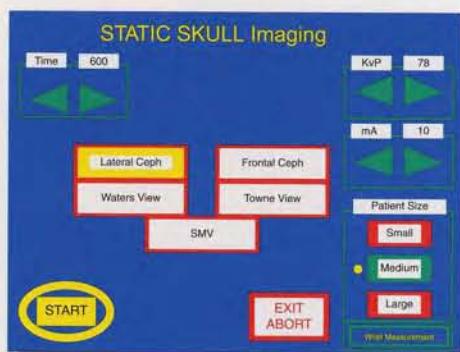


PANOREX CMT

Optional Static Station for 60" Cephalometric Imaging

The Panorex CMT offers an optional Static Station attachment for 60 inch Cephalometric Imaging. The system's capabilities include Static imaging for Lateral, PA & AP, Submental Vertex, Waters and Towne views, all selected via the Touch Screen interface. For Lateral views, a soft tissue filter is provided that can be adjusted to suit individual patient size.

The revolutionary arm design allows for the attachment to "telescope" in and out for space saving purposes.



Technical Specifications

X-ray Source:

Tube Voltage:	50-90 kVp (1 kVp increments)
Tube Current:	5, 7, 10 mA
Focal Spot:	0.5 mm (NEMA)
Voltage Waveshape:	Constant Potential
Film Size:	6" x 12" (Panoramic and Tomography) 8" x 10" (Cephalometric)
Beam Size:	2.3" x 3" (Tomography)

Manual Beam adjustment from Panoramic to Tomographic.

Free Standing or Wall Mount options.

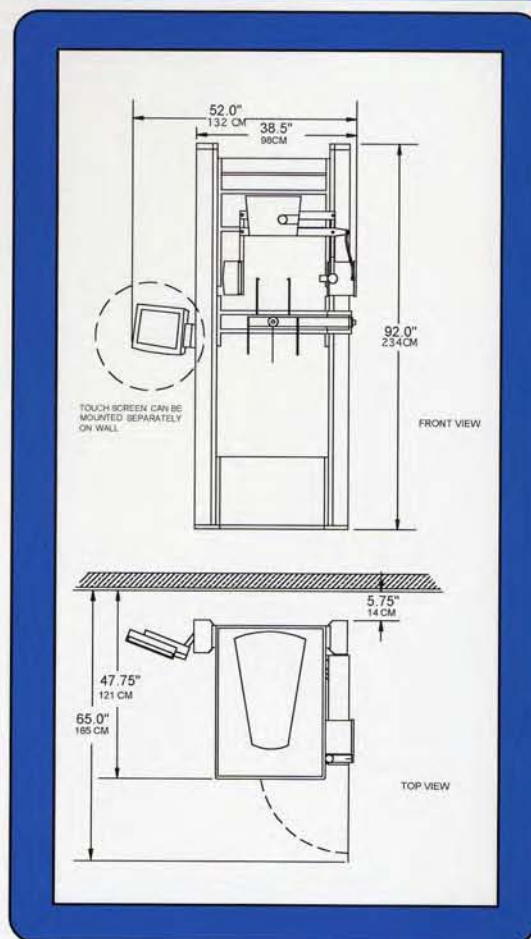
Operations software upgradeable via floppy disk and e-mail.

Motorized Elevation, Cassette Advancement & Robotic system.

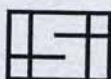
Power Requirements:

Line Voltage:	110V or 220V
Line Current:	15 Amps (max)
Line Frequency:	60Hz / 50Hz
Phase:	Single
Main Fuse:	20 Amps
Electrical Safety:	Nec 1993

Weight: 450 pounds



**Imaging
Sciences
International**



Imaging Systems, Inc.
800-628-1302 • 770-631-9222
www.imagingsystems.com

*The Panorex CMT is
manufactured in
the United States*
1910 North Penn Road
Hatfield, PA 19440